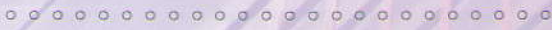




Antimicrobial Fabric Protection



SHOWER and CUBICLE CURTAINS

Flame Resistant

Sure-Chek fabrics resist combustion and will self-extinguish when the source of flame is removed.

Stain Resistant

Most oils, greases, and contaminants may be wiped off with soap, water or mild cleansers. Curtains are easily cleaned in place and maintain a fresh look.

Antistatic

Sure-Chek fabrics are specially formulated with an enduring antistatic property, "Anstat." It prevents the build-up or retention of electrostatic charges that could interfere with the functioning of sensitive life support equipment.

Odor Resistant

Sure-Chek fabrics have been treated to resist bacterial odors. Objectionable organic odors are decreased as a result of the active protection against odor-forming bacterial growth on fabric surfaces.

Durable

Sure-Chek fabrics are incredibly strong, withstanding severe wear and abuse. Extra strength and tear resistance mean extended curtain life.

Antimicrobial to Protect the Fabric

A controlled release system continually sends the antimicrobial agent to the fabric surface. This built-in protection lasts the life of the fabric. It is not a superficial treatment.

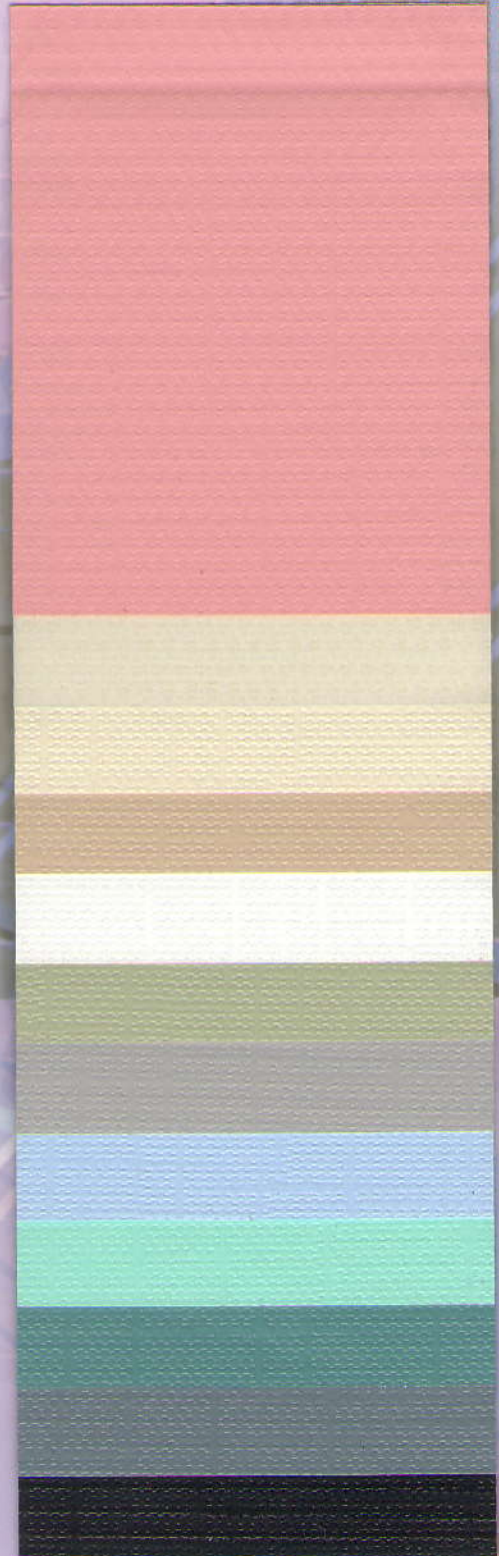
Decorative

Sure-Chek fabrics offer an attractive selection of contemporary colors with a crisp linen finish.

Economical

Lower replacement costs, less inventory, minimal care and maintenance all add up to true economy. Cost-conscious buyers specify high performance Sure-Chek fabrics for their cubicle and shower curtains.

- Mauve
- Translucent
- Dune
- Fawn
- White
- Seaglass
- Gull Gray
- Light Blue
- Mint
- Seafoam
- Pewter
- Black



SHOWER and CUBICLE CURTAINS

Recommended Care

Sure-Chek healthcare fabrics offer "clean-in-place" convenience. Any soils or stains that may accumulate on the fabrics' surfaces should be removed periodically for a fresh new appearance. Use neutral soap suds and lukewarm water. Then rinse with water and allow fabric to dry.

Hard to Clean Spots: Standard household/vinyl cleansers and/or a soft bristle brush can be used for removing troublesome spots or stains. Heavy "dried on" soil may first require soaking to loosen. **DO NOT USE HARSH CLEANSERS OR SOLVENTS.**

Herculite Products, does not recommend the laundering of Sure-Chek healthcare fabrics since laundering may substantially decrease the useful life of these fabrics. However, if laundering is required, follow the procedures of the International Fabricare Institute:

1. Wash and rinse according to the "Synthetic Washing Procedure for Coated Fabrics" with temperatures not exceeding 100° F. (see below).
2. Extract water with centrifugal extractor.
3. Tumble dry in a steam dryer (not gas) at 120° F. maximum. For tailored, precise fitted items, tumble dry without heat or air dry. **DO NOT IRON.**

Synthetic Washing Procedure for Coated Fabrics

(International Fabricare Institute Commercial Washroom Procedures)

Operation	Water	Time Level	Maximum Temperature	Supplies
1st Suds	High	5 Min.	100° F	Neutral Soap & Alkali
2nd Suds	High	10 Min.	100° F	Neutral Soap & Alkali
1st Rinse	High	3 Min.	100° F	Water
2nd Rinse	Low	3 Min.	90° F	Sour to pH 5.0

Use a slow speed machine. Stop the wash wheel for draining and refilling between each cycle.

AICSA

Tel.: (506) 2281-2257 / Fax: (506) 2281-2256
msa@aicsa.com.mx www.aicsa.com.mx
 Apartado Postal: 13381 - 1000
 San José, COSTA RICA